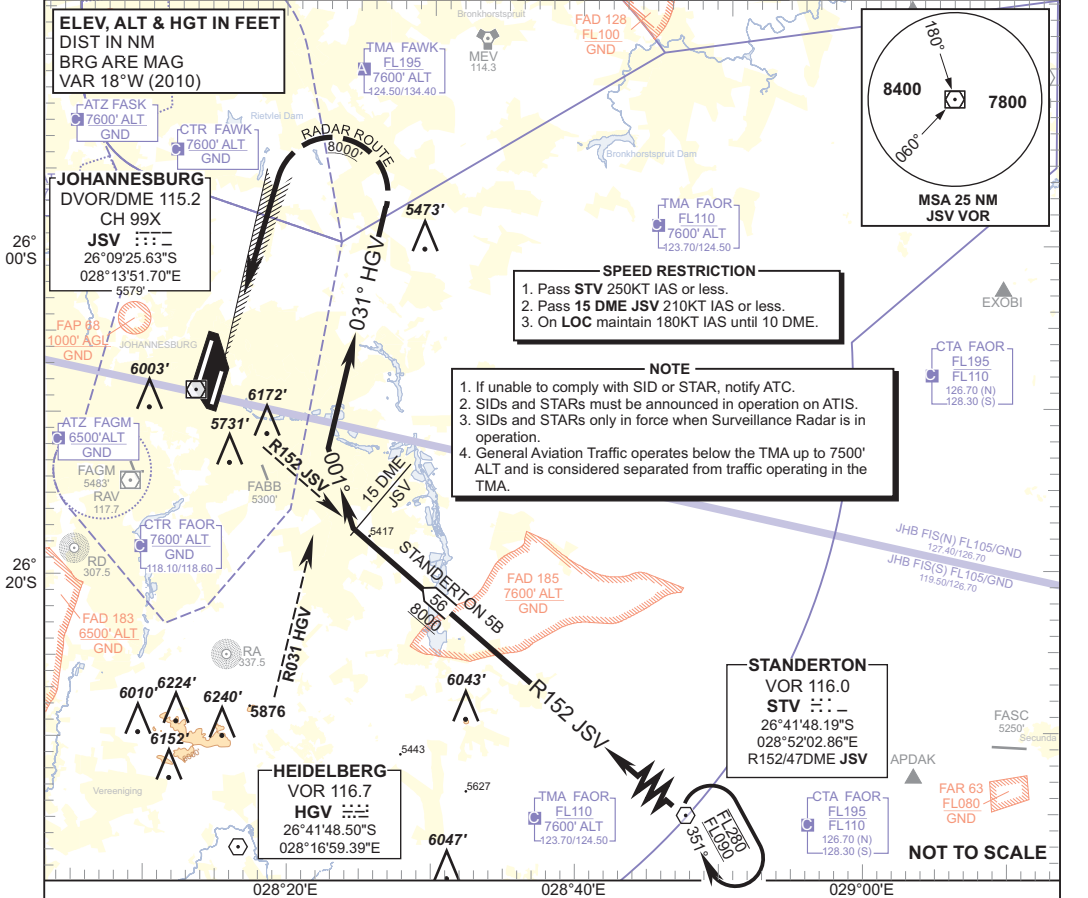


**STANDARD ARRIVAL
CHART -
INSTRUMENT
(STAR)**

TRANSITION ALTITUDE
8000'
TRANSITION LEVEL
ATC

RADAR APP S 124.50 TWR E 118.60
E 124.50 W 118.10
W 123.70 ATIS 126.20
DIR 121.40 115.20
ACC N 126.70 SMC 121.90

JOHANNESBURG
(O.R. TAMBO INTERNATIONAL)
RWY 21L
STANDERTON 5B



CHANGE: SPEED RESTRICTION BLOCK

STANDERTON 5B, RWY 21L Leave STV on R152 JSV (INBD). Passing 15 DME JSV turn right onto track 001° to intercept R031 HGV (OUBD) for radar vectoring onto the ILS LOC RWY 21L.

COMMUNICATION FAILURE PROCEDURE (Squawk 7600)

- Before STV:** Proceed to STV and enter the STV hold. Hold at last assigned level for minimum 5 minutes, then descend to FL130 in the hold, or maintain last assigned level if below FL130. Leave STV on the "After STV" Communication Failure Procedure.
- After STV:** Continue on the routing for the **STANDERTON 5B STAR**. Established on R152 JSV (INBD) and on passing 18 DME JSV descend to FL090. Established on R031 HGV (OUBD) and passing 15 DME JSV turn left onto track 301° and descend to 8000' ALT. Crossing R041 JSV turn left onto track 241° to intercept the ILS LOC RWY 21L. Complete a straight-in ILS APCH and land RWY 21L.
- Note:** Aircraft entering the TMA at FL110 and below are to enter the STV hold at last assigned level, and continue on the routing for the STANDERTON 5B STAR.
- Caution:** Holding patterns below FL110 will be conducted partially outside controlled airspace.

In the event of a missed approach with the intention of diverting to an alternate aerodrome, proceed as follows:

- To the North and North-West: Follow the routing for the VASUR 3B SID.
- To the North-East: Follow the routing for the EGMEN 2B SID (Jet ACFT) or EXOBI 3B SID (Turbo-prop ACFT).
- To the South-East: Follow the routing for the APDAK 2B SID.
- To the South and South-West: Follow the routing for the RAGUL 3B SID.